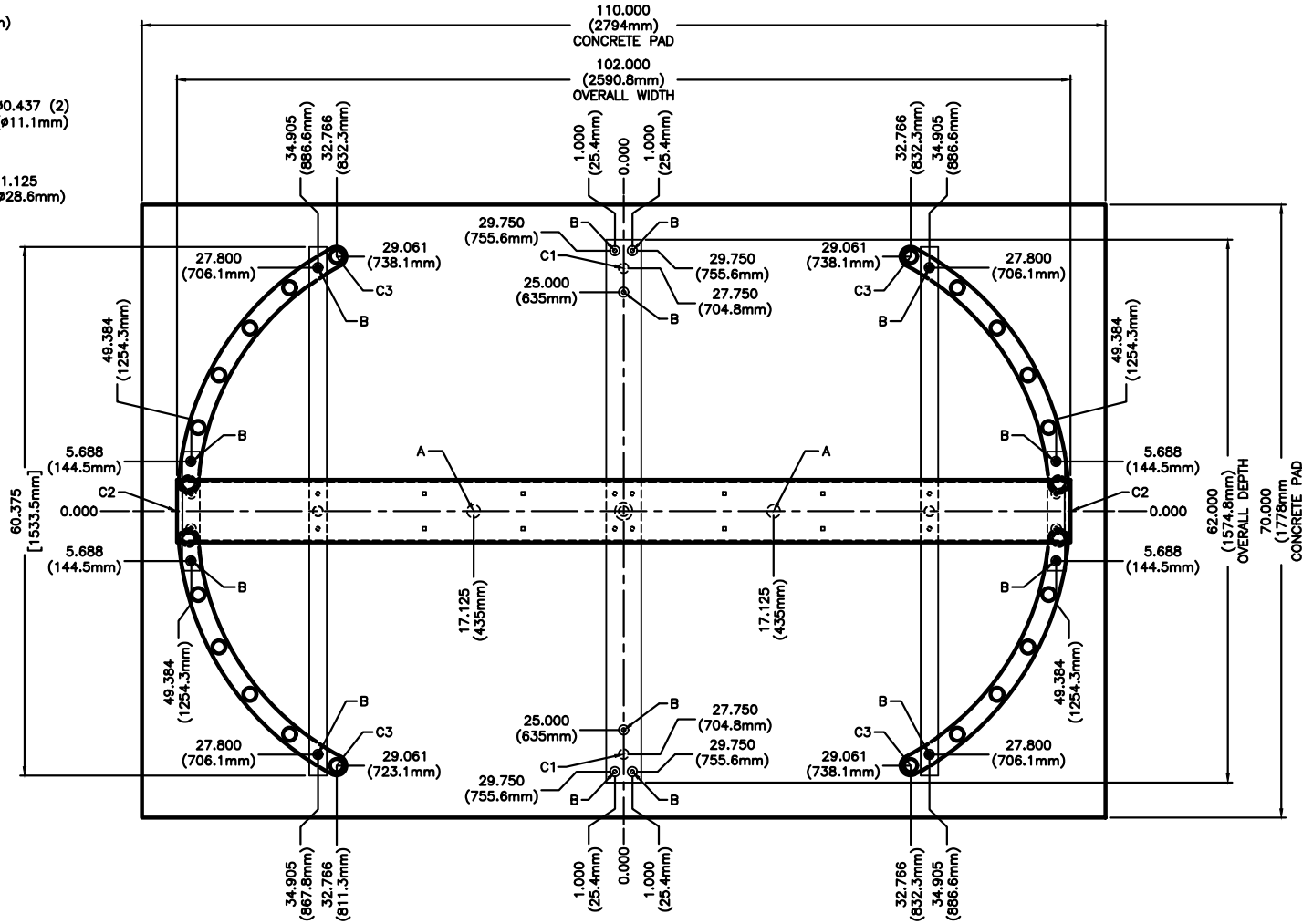
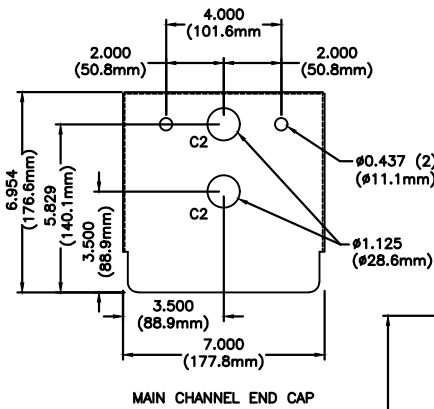


FOR USE ON STAINLESS STEEL HS430-T MODELS



ANCHOR POINTS

- A= $\phi .625$ X 4.500 STAINLESS STEEL CONCRETE ANCHOR QTY 2
- B= $\phi .375$ X 4.500 STAINLESS STEEL CONCRETE ANCHOR QTY 12

SUGGESTED CONDUIT LOCATION

- C1 = THROUGH VERTICAL BARRIER (PREFERRED)
- C2 = THROUGH MAIN CHANNEL END CAP (TYPICAL BOTH SIDES)
- C3 = THROUGH VERTICAL YOKE TUBE

CONCRETE PAD NOTE:

POUR PAD 4.000 (101.6mm) - 6.000 (152.4mm) THICK, AND INSURE IT IS LEVEL $\pm .125$ (3.1mm)

PROPRIETARY AND CONFIDENTIAL
THIS DRAWING IS THE PROPERTY OF CONTROLLED ACCESS, INC., AND CONTAINS PROPRIETARY INFORMATION. IT MAY NOT BE COPIED, REPRODUCED OR TRANSMITTED IN ANY MANNER TO A THIRD PARTY WITHOUT PRIOR WRITTEN PERMISSION OF CONTROLLED ACCESS, INC.

MATERIAL: N/A	SCALE: 1 = 20	APPROVED BY:	DRAWN BY: LC III
	DATE: 1/10/18		REVISED: CG 8/28/24
FINISH: TOL. UNLESS OTHERWISE SPEC. .X \pm .1 .XX \pm .03	CONTROLLED ACCESS, INC. 1535 Industrial Parkway South Brunswick, Ohio 44212		330-273-6185 FAX 330-273-4468 USA 1-800-942-0829 FAX 1-800-942-0828

HS430-T SS ANCHOR POINTS\CONDUIT 2024